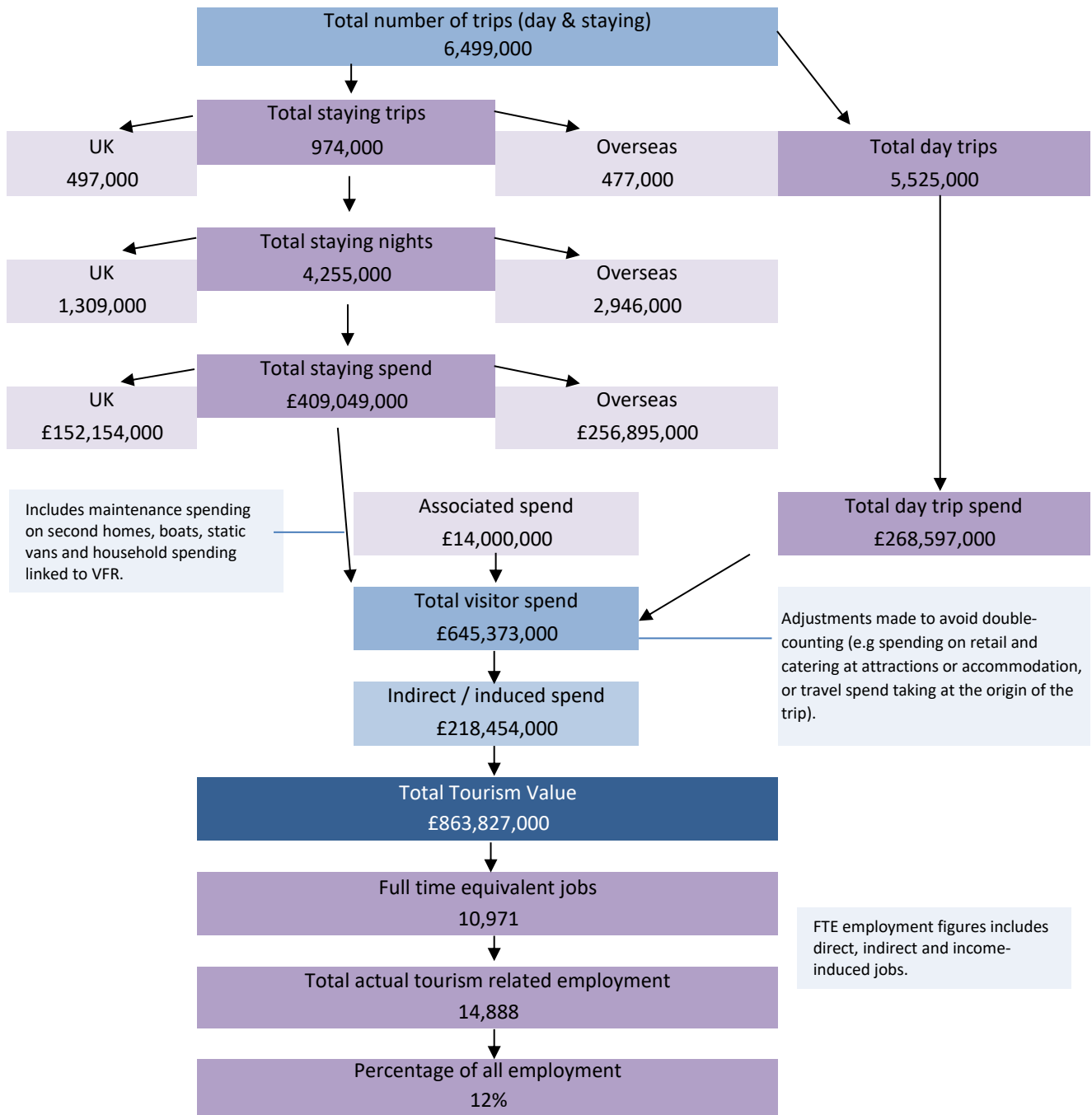


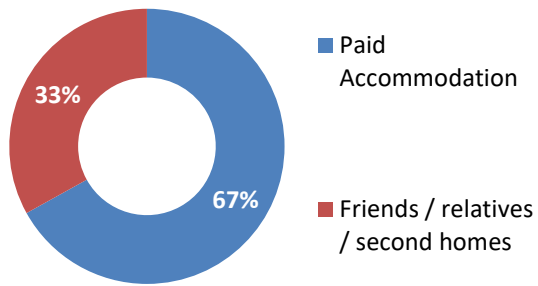
Economic Impact of Tourism – Headline Figures **Oxford - 2022**



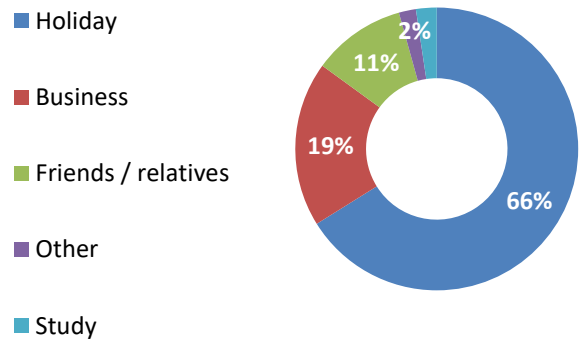
Economic Impact of Tourism – year on year comparisons				Year-on-year comparison	Pre-pandemic Nominal value*	Pre-pandemic Real-term value*
	2022	2021	2019	2022 v 2021	2022 v 2019	2022 v 2019
Day Trips						
Day trips volume	5,525,000	4,962,000	6,606,504	11%	-16%	-16%
Day trips value	£268,597,000	£229,651,000	£318,588,197	17%	-16%	-18%
Overnight trips						
Number of trips	974,000	515,000	1,216,000	89%	-20%	-20%
Number of nights	4,255,000	1,821,000	5,143,000	134%	-17%	-17%
Trip value	£409,049,000	£170,201,000	£456,013,000	140%	-10%	-25%
Total value	£863,827,000	£497,666,000	£989,195,900	74%	-13%	-23%
Actual jobs	14,888	9,136	17,046	63%	-13%	-23%

Nominal values (not taking inflation into account). Real terms values (adjusted for inflation)

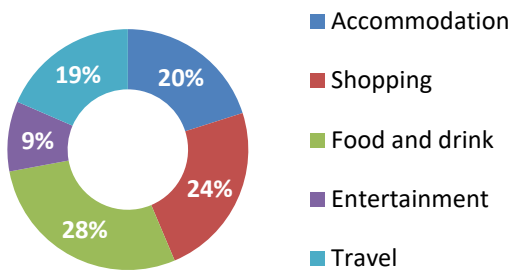
Type of Accommodation



Trips by Purpose



Breakdown of Expenditure



Type of Employment

